

For Lease: Clermont Shoppes

9235 CRAWFORDSVILLE ROAD

This building is
100%
occupied!

For more information, please contact:

Larry W. Harshman, CPM®

317-345-8981 (cell)

317-630-1000 (office)

harshman@harshmanonline.com



**HARSHMAN
PROPERTY
SERVICES, LLC**

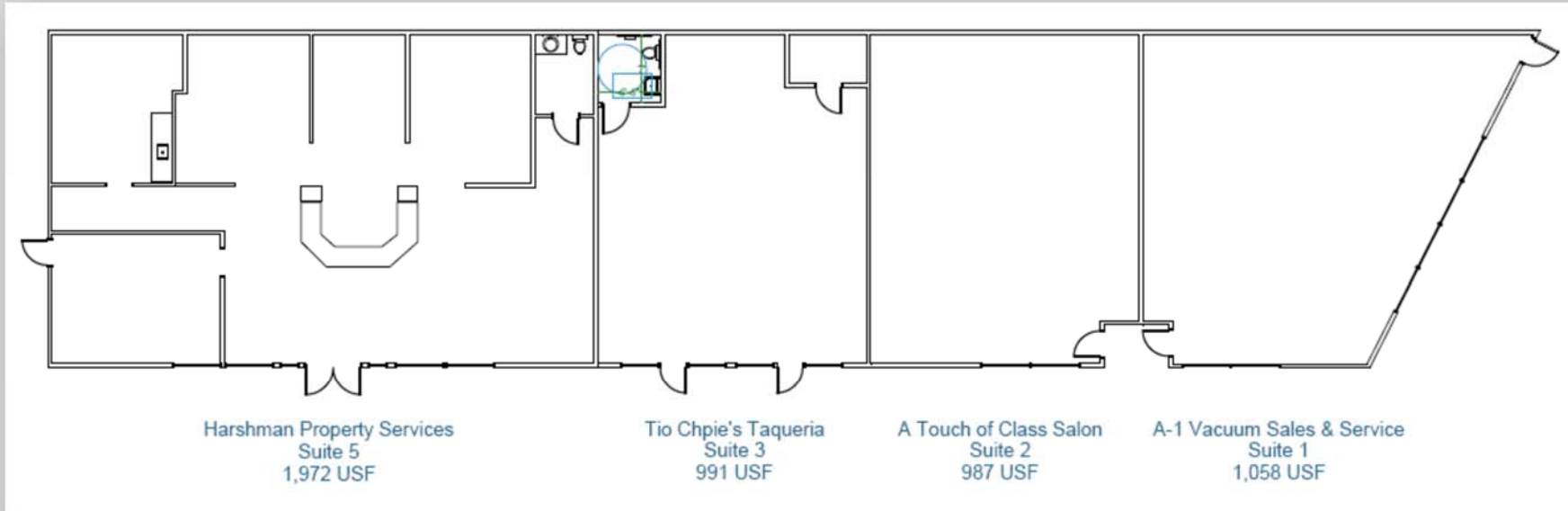


SMALL, AFFORDABLE OFFICE / RETAIL SUITES

- Great community retail center
- At your door parking
- Good drive-by visibility on high-traffic Crawfordsville Road, recently widened with redesigned intersection at Raceway Road
- Next door to new Speedway gas station with convenience store
- Ideal for start up business
- Professionally managed

For Lease: Clermont Shoppes

9235 CRAWFORDSVILLE ROAD



**HARSHMAN
PROPERTY
SERVICES, LLC**
317-630-1000

